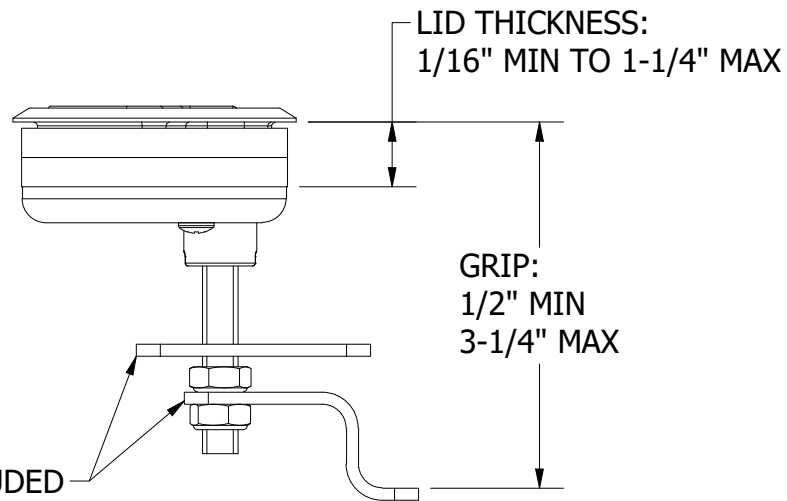
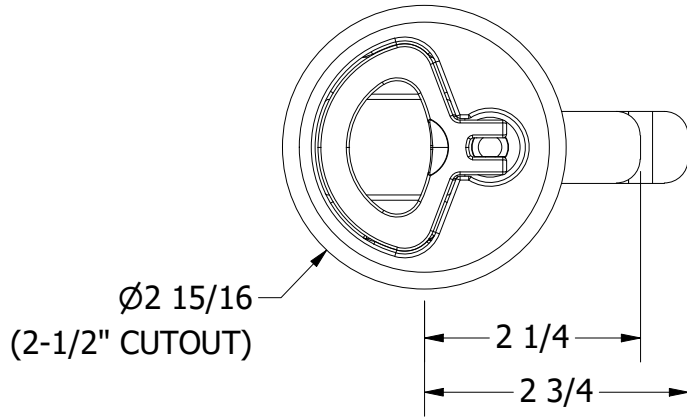


**NOTES:**

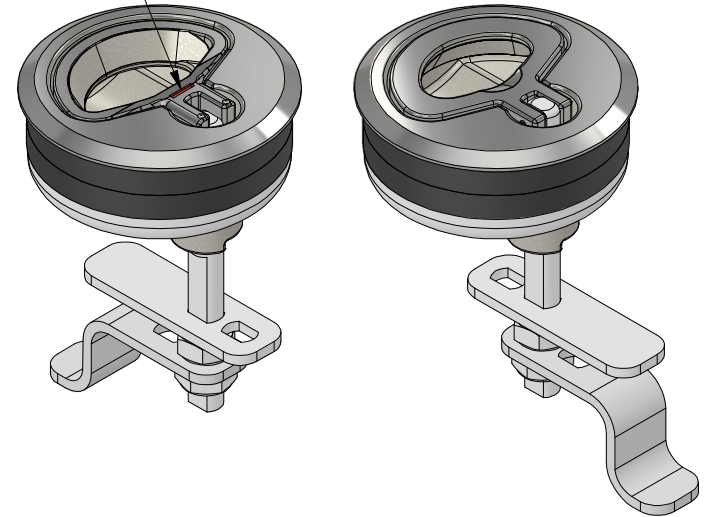
1. MATERIAL: 316SS
2. FINISH: MIRROR POLISH



BOTH CAMS INCLUDED

REVISION HISTORY		
REV	DESCRIPTION	DATE
1	FILL CAVITY IN HANDLE RECESS, SHORTEN LIMIT PIN, ECN1037	6/16/25
2	POLISH UNDERSIDE HANDLE, ADD RED INDICATOR, ECN1045	9/9/25
3	REDUCE HANDLE THICKNESS	9/18/25

UNLATCHED POSITION  
PAINTED RED



**WHITE WATER**  
MARINE HARDWARE

TITLE			
2-1/2" ROUND COMPRESSION LATCH PART NUMBER: 7155S			
SIZE	DRAWING NO.		REV
A	WWMH-7155S CC		3
SCALE	DRAWN	DATE	SHEET
1 : 2	KSR	6/16/2025	1 OF 1

**PROPRIETARY AND CONFIDENTIAL**  
THE INFORMATION CONTAINED IN THIS DRAWING IS THE SOLE PROPERTY OF WHITE WATER MARINE HARDWARE. ANY REPRODUCTION IN PART OR AS A WHOLE WITHOUT WRITTEN PERMISSION IS PROHIBITED.