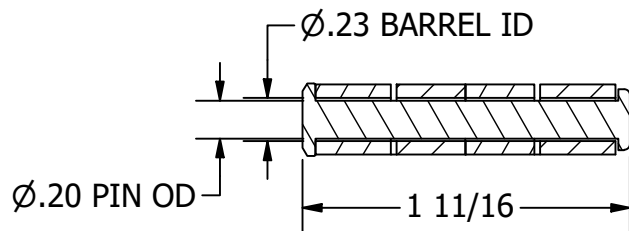
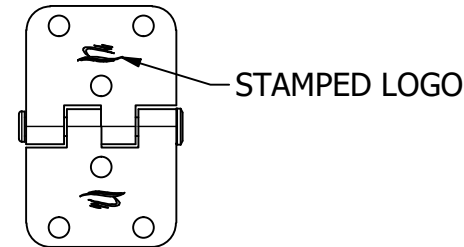
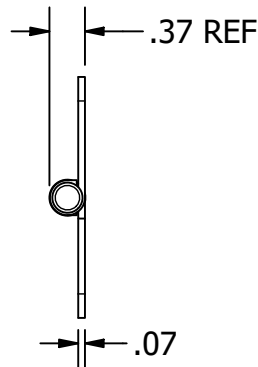
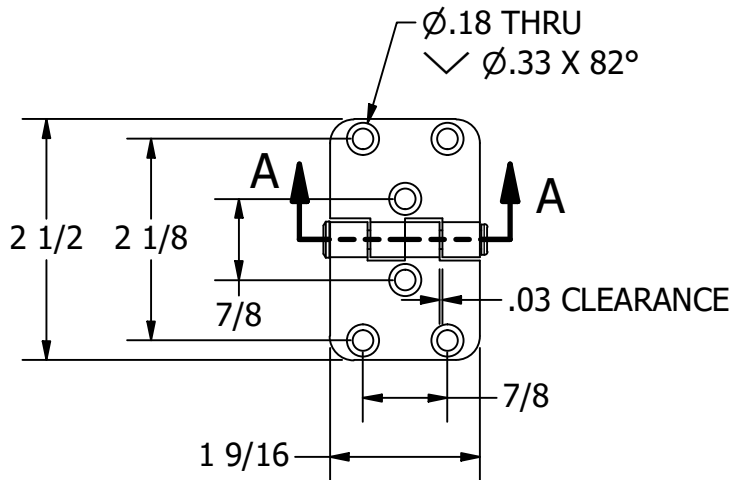


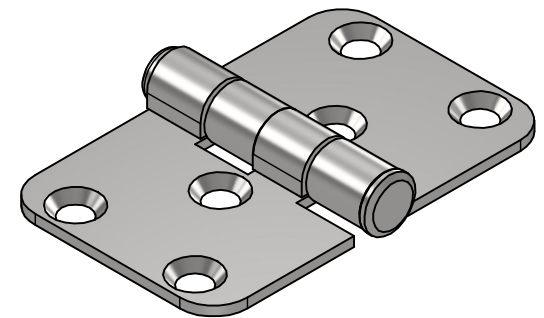
NOTES:

1. FINISH: HIGH POLISH

REVISION HISTORY		
REV	DESCRIPTION	DATE
1	RIVET PIN WAS THREADED BARREL ECN1017	7/11/24



SECTION A-A
SCALE 1 : 1



UNLESS OTHERWISE SPECIFIED:
BREAK ALL SHARP EDGES
DIMENSIONS ARE IN INCHES
TOLERANCES:
FRACTIONAL: $\pm 1/16$
DECIMAL: X.X $\pm .05$
 X.XX $\pm .01$
 X.XXX $\pm .005$
ANGULAR: $\pm 1^\circ$
FINISH: 120Ra



WHITE WATER
MARINE HARDWARE

TITLE
316SS HINGE, 2.5" X 1.5", 2 HOLES NEAR EDGE
PART NUMBER: 7711ES

PRELIMINARY

PROPRIETARY AND CONFIDENTIAL
THE INFORMATION CONTAINED IN THIS DRAWING IS THE SOLE PROPERTY OF WHITE WATER MARINE HARDWARE. ANY REPRODUCTION IN PART OR AS A WHOLE WITHOUT WRITTEN PERMISSION IS PROHIBITED.

SIZE A	DRAWING NO. WWMH-7711ES	REV 1
SCALE 1 : 2	DRAWN KSR	DATE 3/15/2024
		SHEET 1 OF 1