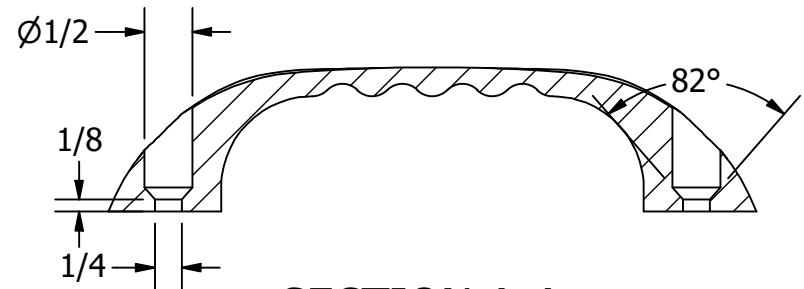
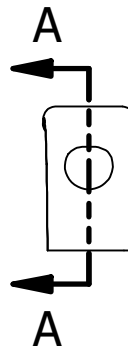
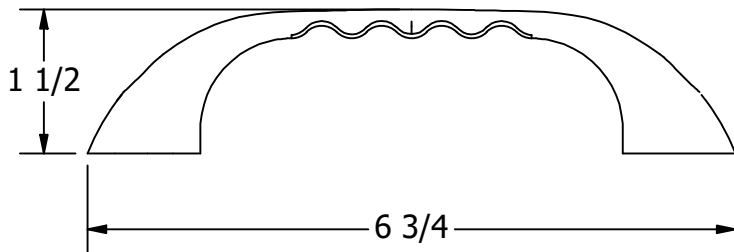
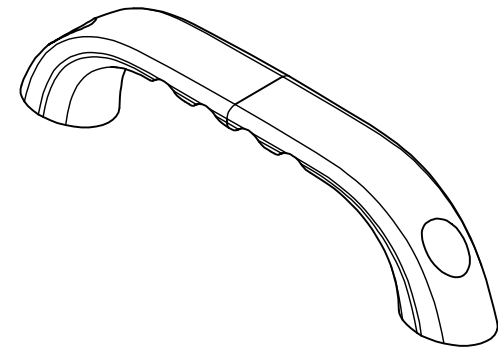
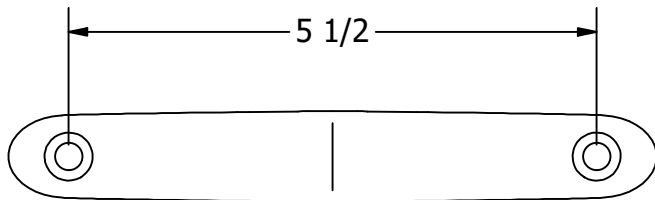


# FOR REFERENCE ONLY


NOTE:  
316 STAINLESS STEEL  
HIGH POLISH FINISH



SECTION A-A  
SCALE 1 / 2

UNLESS OTHERWISE SPECIFIED:  
BREAK ALL SHARP EDGES  
DIMENSIONS ARE IN INCHES  
TOLERANCES:  
FRACTIONAL:  $\pm 1/16$   
DECIMAL: X.X  $\pm .05$   
          X.XX  $\pm .01$   
          X.XXX  $\pm .005$   
ANGULAR:  $\pm 1^\circ$   
FINISH: 120Ra

**PROPRIETARY AND CONFIDENTIAL**  
THE INFORMATION CONTAINED IN THIS  
DRAWING IS THE SOLE PROPERTY OF WHITE  
WATER MARINE HARDWARE. ANY REPRODUCTION  
IN PART OR AS A WHOLE WITHOUT WRITTEN  
PERMISSION IS PROHIBITED.

 <b>WHITE WATER</b> MARINE HARDWARE		TITLE	
		TOP MOUNTED GRAB RAIL PART NUMBER: 7921S	
SIZE	DRAWING NO.		REV
A	WWMH-7921S		0
SCALE	DRAWN	DATE	SHEET
1/2	RC	8/6/2024	1 OF 1