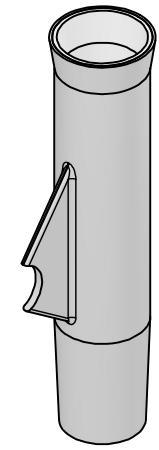
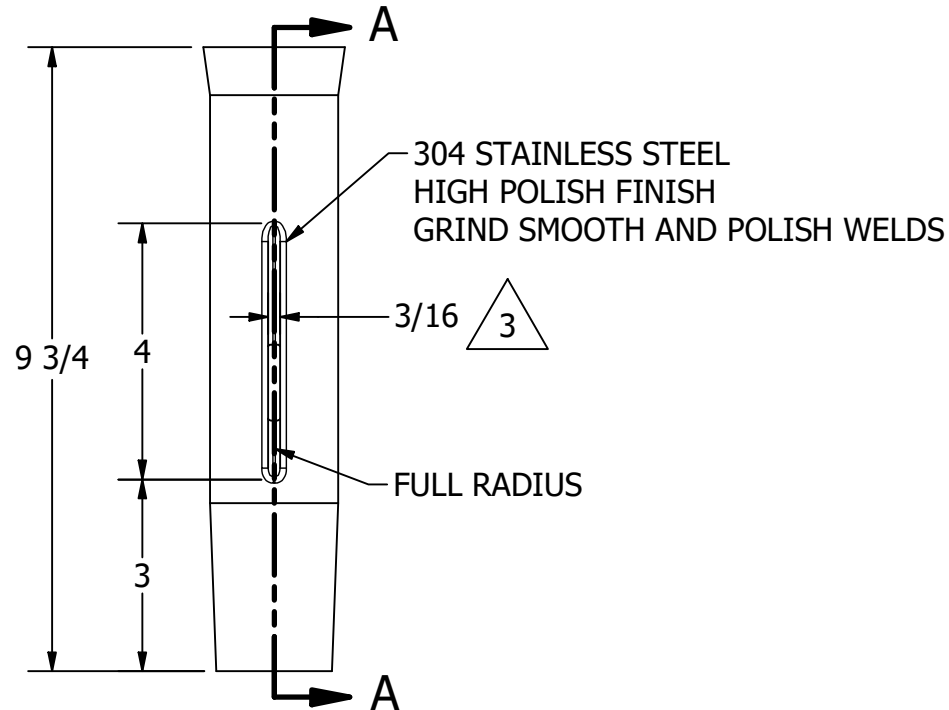
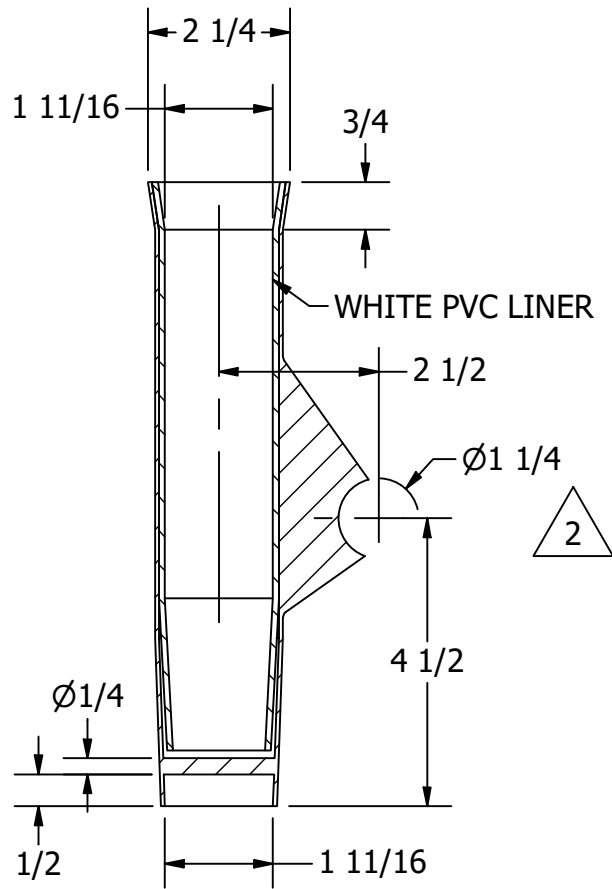


NOTES

1. MATERIAL: 304SS
2. FINISH: HIGH POLISH

REVISION HISTORY

REV	DESCRIPTION	DATE
1	3/8" THK BLADE WAS 3/16", GROUND AND POLISHED WELDS WERE POLISHED ONLY, MOVE BLADE	5/6/24
2	INCREASE BLADE EDGE RADIUS 3/16 WAS 1/8, INCREASE BLADE CUTOUT 1-1/4" WAS 1"	9/17/24
3	3/16" THK MATERIAL WAS 3/8" ECN1027	11/15/24



SECTION A-A

UNLESS OTHERWISE SPECIFIED:
 BREAK ALL SHARP EDGES
 DIMENSIONS ARE IN INCHES
 TOLERANCES:
 FRACTIONAL: ± 1/16
 DECIMAL: X.X ± .05
 X.XX ± .01
 X.XXX ± .005
 ANGULAR: ± 1°
 FINISH: 120Ra



WHITE WATER
MARINE HARDWARE

TITLE
STAINLESS WELD ON ROD HOLDER W/ BLADE
 PART NUMBER: 53306S

PROPRIETARY AND CONFIDENTIAL
 THE INFORMATION CONTAINED IN THIS
 DRAWING IS THE SOLE PROPERTY OF WHITE
 WATER MARINE HARDWARE. ANY REPRODUCTION
 IN PART OR AS A WHOLE WITHOUT WRITTEN
 PERMISSION IS PROHIBITED.

SIZE A	DRAWING NO. WWMH-53306S	REV 3
SCALE 1 : 3	DRAWN RC	DATE 8/29/2024
		SHEET 1 OF 1