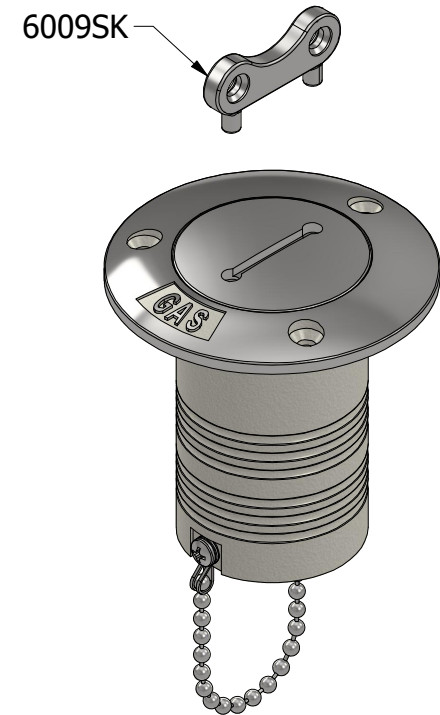
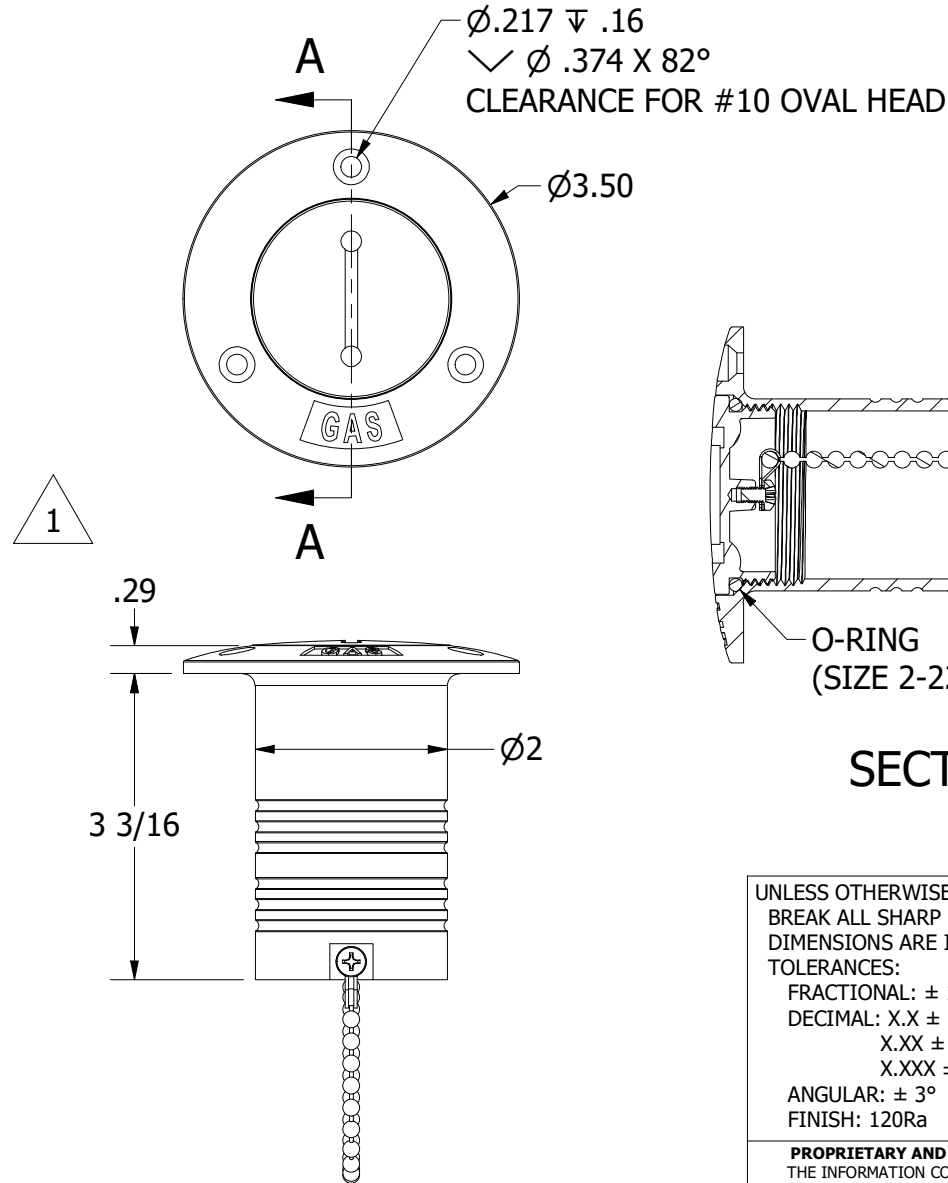


NOTES:

1. MATERIAL: 316SS
2. FINISH: HIGH POLISH

| REVISION HISTORY | | |
|------------------|-----------------------------|---------|
| REV | DESCRIPTION | DATE |
| 1 | .29 FLANGE WAS .23, ECN1073 | 4/15/26 |



SECTION A-A

UNLESS OTHERWISE SPECIFIED:
 BREAK ALL SHARP EDGES
 DIMENSIONS ARE IN INCHES
 TOLERANCES:
 FRACTIONAL: $\pm 1/16$
 DECIMAL: X.X $\pm .05$
 X.XX $\pm .03$
 X.XXX $\pm .010$
 ANGULAR: $\pm 3^\circ$
 FINISH: 120Ra

PROPRIETARY AND CONFIDENTIAL
 THE INFORMATION CONTAINED IN THIS
 DRAWING IS THE SOLE PROPERTY OF WHITE
 WATER MARINE HARDWARE. ANY REPRODUCTION
 IN PART OR AS A WHOLE WITHOUT WRITTEN
 PERMISSION IS PROHIBITED.



WHITE WATER
 MARINE HARDWARE

| | | | | |
|-------|-------------|--------------------|--------------|-----|
| TITLE | | DECK FILL, GAS, 2" | | |
| | | PART NUMBER: 6007S | | |
| SIZE | DRAWING NO. | | | REV |
| A | WWMH-6007S | | | 1 |
| SCALE | DRAWN | DATE | SHEET 1 OF 1 | |
| 1 : 2 | KSR | 4/15/2026 | | |