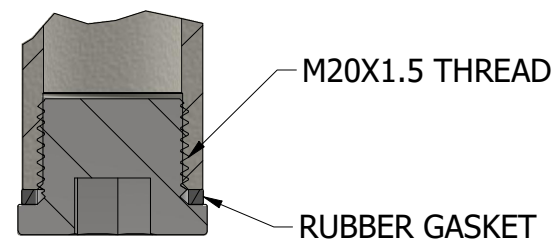
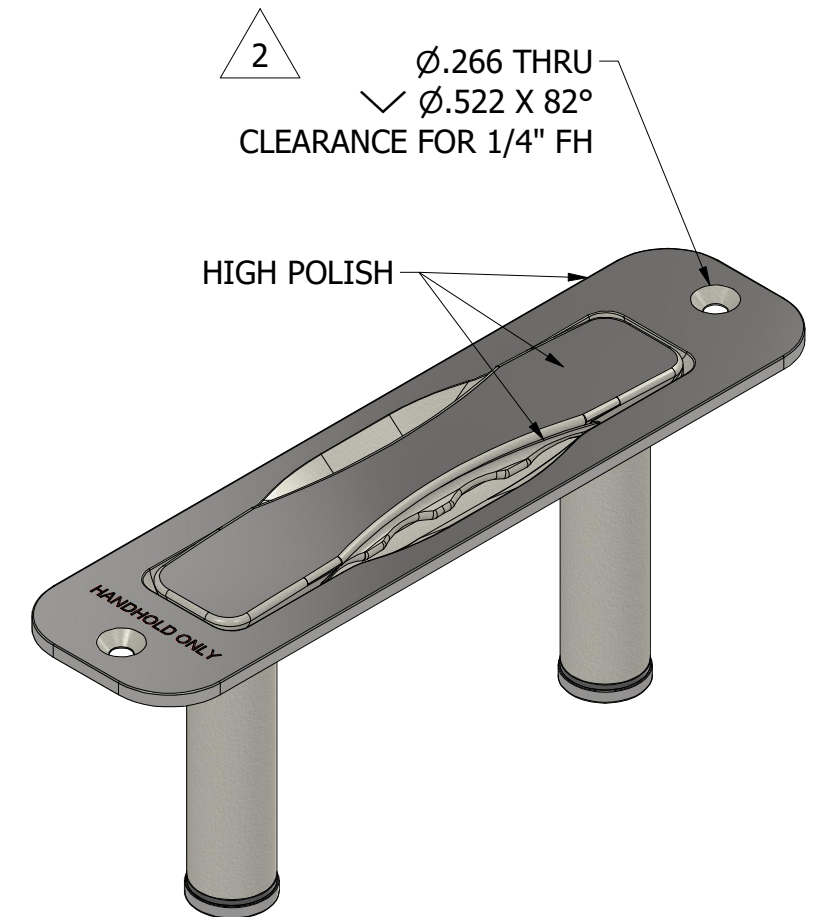
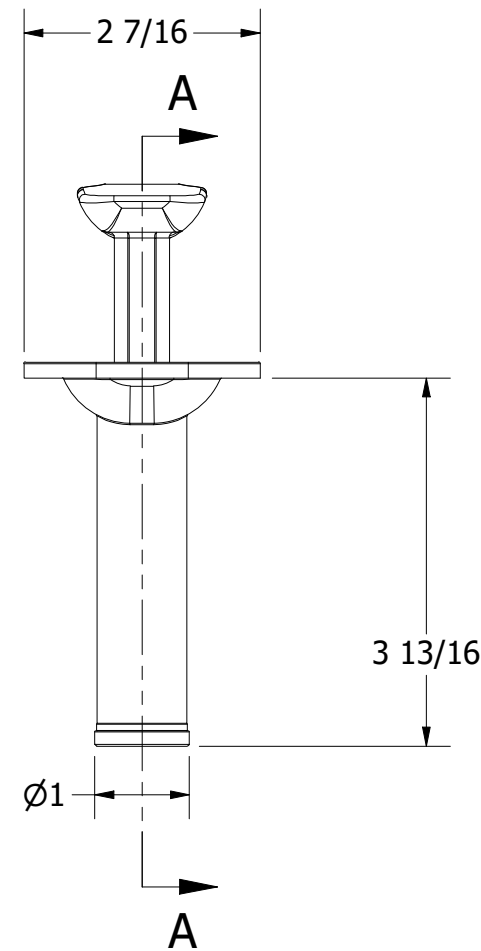
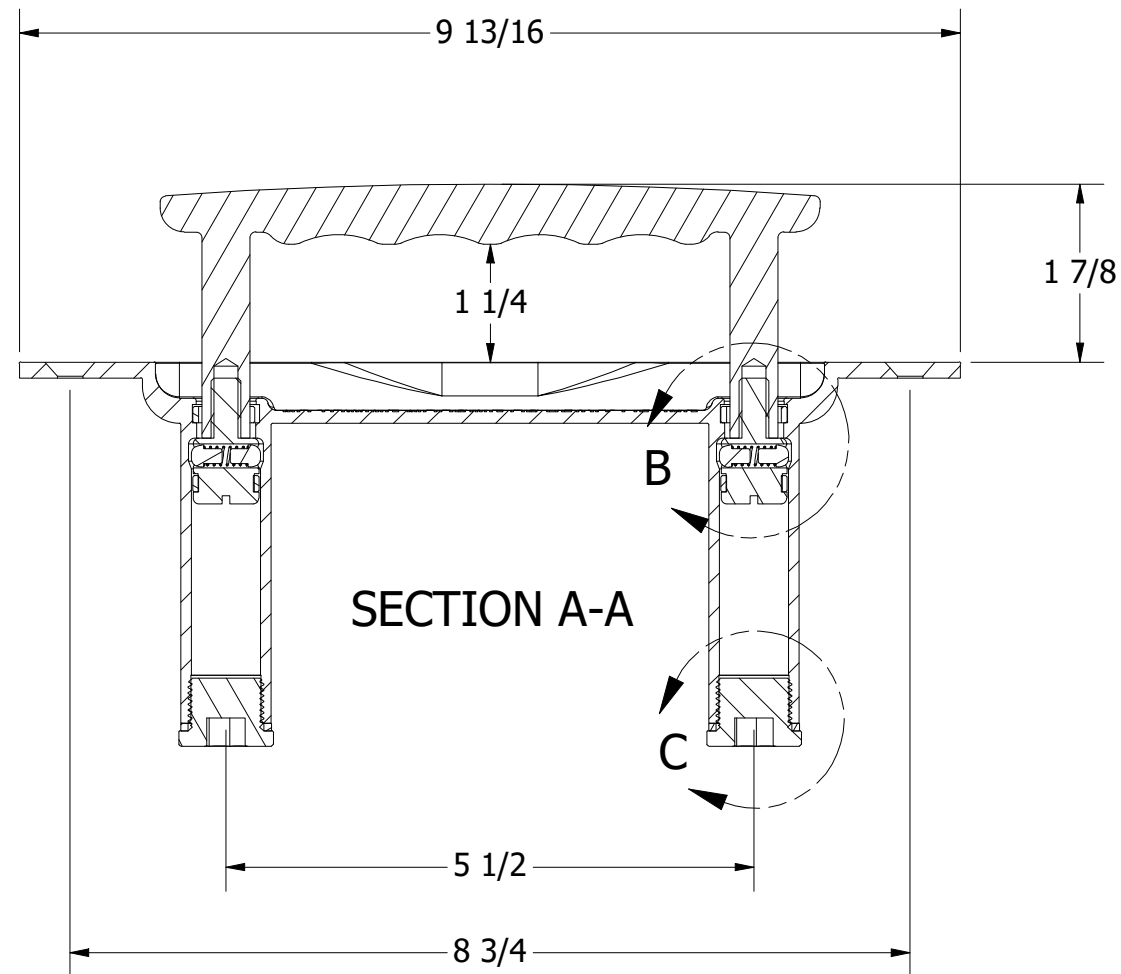


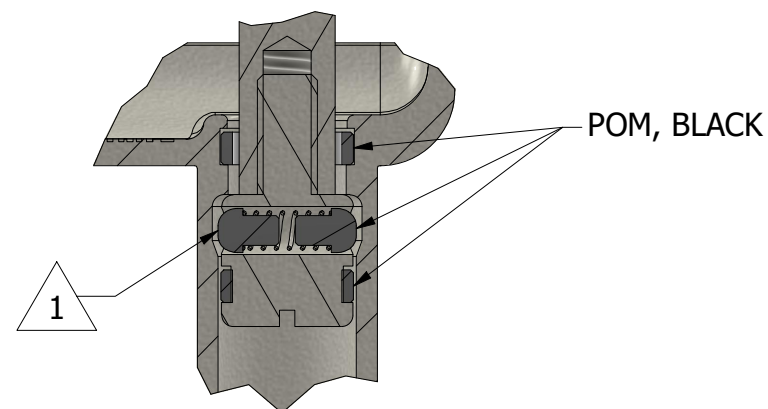
NOTES:

1. MATERIAL: 316SS
2. FINISH: HIGH POLISH

REVISION HISTORY		
REV	DESCRIPTION	DATE
1	ADJUST TEXT AND MOUNTING HOLE POSITION 8-3/4 WAS 8-1/2	8/21/24
2	1/4 FH CLEARANCE WAS 5/16, ECN1061	12/4/25



DETAIL C  
SCALE 1 : 1



DETAIL B  
SCALE 1 : 1

UNLESS OTHERWISE SPECIFIED:  
BREAK ALL SHARP EDGES  
DIMENSIONS ARE IN INCHES  
TOLERANCES:  
FRACTIONAL: ± 1/16  
DECIMAL: X.X ± .05  
          X.XX ± .01  
          X.XXX ± .005  
ANGULAR: ± 1°  
FINISH: 120Ra

**PROPRIETARY AND CONFIDENTIAL**  
THE INFORMATION CONTAINED IN THIS  
DRAWING IS THE SOLE PROPERTY OF WHITE  
WATER MARINE HARDWARE. ANY REPRODUCTION  
IN PART OR AS A WHOLE WITHOUT WRITTEN  
PERMISSION IS PROHIBITED.

		<b>WHITE WATER</b> MARINE HARDWARE	
TITLE TOP MOUNT PULL UP GRAB RAIL PART NUMBER: 7941S			
SIZE B	DRAWING NO. WWMH-7941S	DATE 7/3/2025	REV 2
SCALE 1 : 2	DRAWN KSR	SHEET 1 OF 1	