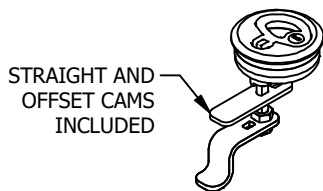


# Installation Guide

7154 & 7154SLK COMPRESSION LATCH

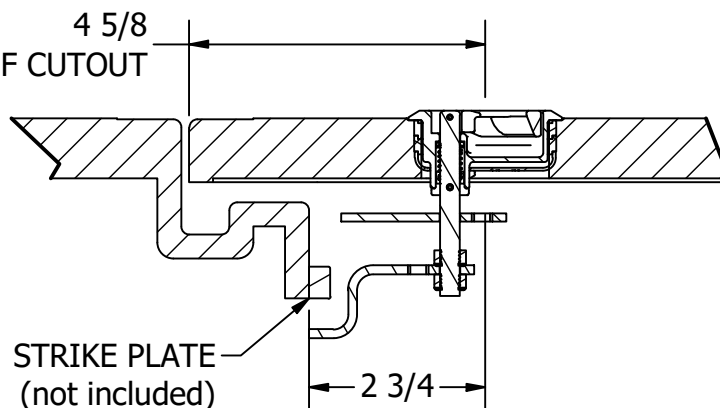


**WHITE WATER**  
MARINE HARDWARE



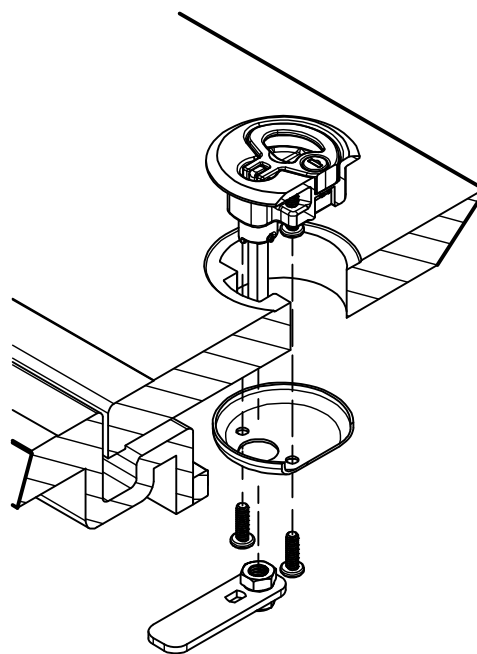
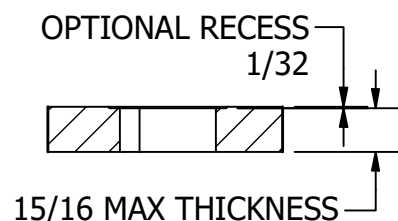
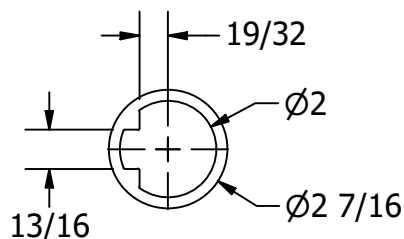
STRAIGHT AND  
OFFSET CAMS  
INCLUDED

4 5/8  
TO CENTER OF CUTOUT



## Required Materials (not included)

- Safety glasses
- Drill and bits
- Jigsaw (or router)
- Masking tape
- Ruler
- Pencil



## Instructions

1. Determine suitable lid for installation of compression latch. Consider size of lid and strength of mounting surfaces. Multiple latches may be required.
2. Beginning at the strike plate mounting surface, measure 2-3/4" to the center of the latch cutout and mark the location. Sketch the cutout shape per above diagram. Alternatively, use the latch as a template to mark the cutout location and shape. Tip: Cover surface using masking tape and make reference marks to position and align the latch.
3. Make cutout for latch body. Any exposed core should be sealed to prevent water absorption.
4. Test fit latch to be sure final position is as desired.
5. Remove all masking tape. If bedding hardware with an adhesive/sealant, prepare surface as recommended per manufacturer instructions.
6. Install latch and strike plate. Two black plastic spacers are included with each latch. These are to be used with thinner lids. Thicker lids may not require any spacers. Caution: over tightening screws may cause the latch backing plate to bend.
7. Wipe down metal surfaces using Stainless Steel polish/protectant.